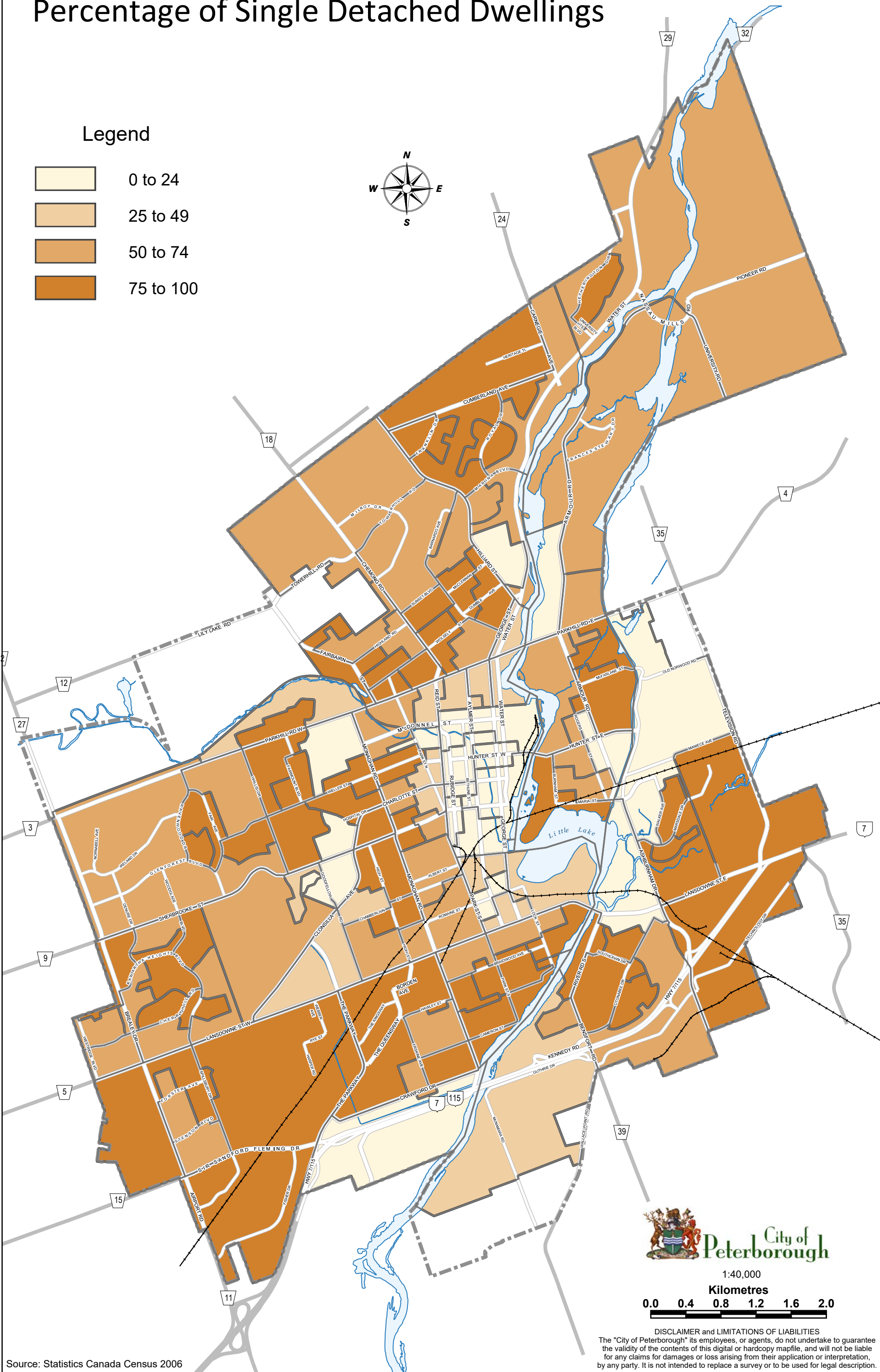
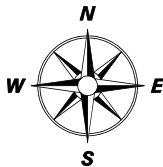
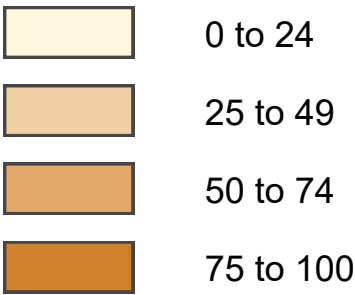


Percentage of Single Detached Dwellings

Legend



Source: Statistics Canada Census 2006

DISCLAIMER and LIMITATIONS OF LIABILITIES
The "City of Peterborough" its employees, or agents, do not undertake to guarantee the validity of the contents of this digital or hardcopy mapfile, and will not be liable for any claims for damages or loss arising from their application or interpretation, by any party. It is not intended to replace a survey or to be used for legal description.